



Morphological Differences of White Muscle Fibers and Genetic Diversity of Fast and Slow Growing Atlantic Sturgeons (*Acipenser oxyrinchus*)

Dobrochna Adamek¹, Małgorzata Rzepkowska¹, Hanna Panagiotopoulou², Teresa Ostaszewska¹, Magdalena Fajkowska¹, Maciej Kamaszewski¹, Ryszard Kolman³

¹ Department of Ichthyobiology, Fisheries and Aquaculture Biotechnology Faculty of 4 Animal Sciences, Warsaw University of Life Sciences, 02-786 Warsaw, Poland

² Institute of Biochemistry and Biophysics, Polish Academy of Sciences, Pawińskiego 6 5a, 02-106 Warsaw, Poland; Museum and Institute of Zoology, Polish Academy of 7 Sciences, Wilcza 64, 00-679 Warsaw, Poland.

³ Department of Ichthyology, Inland Fisheries Institute in Olsztyn, Oczapowskiego 10, 9 10-718 Olsztyn-Kortowo, Poland

Phone: 22 5936640; Fax: (022) 59 36 646

E-mail: 13 dobrochna_adamek@sggw.pl

Abstract

The aim of this study was to establish causes of variation in body weight of Atlantic sturgeons reared for reintroduction program. Substantial disproportion of individuals released into freshwaters may influence reintroduction success. Histological analysis of white muscle was conducted due to large share of this tissue in body weight. Comparison of morphological structure of white muscle tissue showed significant statistical differences between the fast and the slow growing sturgeons. Mosaic hyperplasia (MH) was observed in white muscle tissue in both sturgeon groups, but the number of proliferating myonuclei was significantly higher in slow growing individuals. Genetic analysis applying 16 microsatellite loci revealed comparable levels of polymorphism and assigned the studied individuals into kin groups consisting of both fast and slow growing sturgeons. The study revealed that the slow growing group had higher growth potential in further stages of development, but the fast growing sturgeons based on the histological analysis of muscle fiber distribution were more advanced in muscle tissue growth. Moreover difference in growth rate could be caused by complex polygenic inheritance of the trait.

Keywords: Atlantic sturgeon, growth, white muscle fibers, microsatellite DNA

Introduction

Muscle tissue constitute up to 60 - 80% of fish body weight, and have therefore major impact on size and growth rate of fish (Johnston, Bower & Macqeen, 2011). The continuous development of muscle tissue is caused by proliferation of myogenic precursor cells (MPCs) (Brodeur, Peck & Johnston, 2002). Two processes are characteristic for muscle growth and development – hyperplasia and hypertrophy. In

myogenesis two types of hyperplasia can be distinguished: stratified hyperplasia (SH), and mosaic hyperplasia (MH) (Johnston et al., 2011). SH, the step of myogenesis occurring after myoblast fusion is observed during embryogenesis, and shortly after hatching (Steinbacher, Haslett, Sanger & Stoiber, 2006; Valente et al., 2013). MH, a step following SH, is characterized by presence of muscle fibers of various sizes (Rescan, 2005; Johnston et al., 2011). Proliferation of somatic cells, including MPCs, can be detected using antibodies directed against proliferating cell nuclear antigen (PCNA). Synthesis of PCNA is characteristic during S phase of the cell cycle.

Growth is a quantitative trait, under polygenic control, with the most important influence on the somatotrophic axis and myogenic transforming growth factor superfamily (Valente et al., 2013; Yue, 2013). Identification of the major quantitative trait loci (QTLs) or genes affecting growth is performed usually by linkage map construction and QTL mapping or in association studies and candidate gene approaches (DeSantis & Jerry, 2007; Yue, 2013). Heritability of growth is usually moderate to high ($h^2=0.2$ to 0.7), resulting in correlations of growth rates between closely related individuals (Ma, Wang & Lei, 2009). It is generally accepted that the loss of genetic diversity may result in inbreeding depression leading to fitness decline often manifested by decrease of growth rate (Borrell et al., 2011 and references therein). Genetic polymorphism and kinship can be easily measured using microsatellite loci that are commonly used as markers in fish restitution and conservation programs including sturgeons (Panagiotopoulou et al., 2012; Waldman et al., 2013; O'Leary, Dunton, King, Frisk & Chapman, 2014; Popovic et al., 2014).

One of the most important aspects of Atlantic sturgeon (*Acipenser oxyrinchus*) breeding is to define causes of large variation in sizes of individuals from the same cohort. Atlantic sturgeon, in contrast to other sturgeon species commonly breed in aquaculture, is difficult to rear, due to specific nutritional requirements and high mortality of larvae and juveniles (Piotrowska, Szczepkowska, Kozłowski, Wundrelich & Szczepkowski, 2013). This species is currently under restitution in Poland as its native population became extinct in the '60s of the last century. Based on population genetic studies, Atlantic sturgeons from St. John River (Canada) were chosen for the restitution purposes in Polish waters (Kolman, Kapusta, Duda & Wiszniewski, 2011; Popovic et al., 2014). Since 2004, fry has been produced through artificial spawning of wild sturgeons, reared under artificial conditions and released into Polish waters (Kolman et al., 2011). As slow growing individuals exhibit often lower fitness, disease resistance and survival rate that cause elimination from stocks (Janhunen, Kause & Jarvisalo, 2012 and references therein), abilities of Atlantic sturgeon fingerlings to adapt to natural conditions might be lower for individuals with lower body weight and length. Therefore, it is essential to recognize the most important causes of this phenomenon, to minimize the differences in growth rate. Main factors affecting fish growth described so far are: environmental conditions (Szczepkowski, Szczepkowska & Piotrowska, 2011), exercise training (Martin & Johnston, 2006), diet, including quality and availability of food (Ostaszewska, Dabrowski, Wegner & Krawiec, 2008; Kamaszewski, Prasek, Ostaszewska & Dabrowski, 2014) and genetic background (Valente et al., 2013).

During rearing of Atlantic sturgeon fingerlings, presence of large disproportions in total body length and weight between individuals belonging to the same cohorts were recorded. Aiming to compare individuals with highly diverse body weight, comparative histological analysis of white muscle tissue were performed.

Additionally, genetic polymorphism and kinship of fast and slow growing sturgeons were characterized, in order to verify, if these genetic parameters correlated meaningfully with the observed phenomenon.

Materials and Methods

Fish Rearing and Sampling Conditions

Fingerlings of Atlantic sturgeons, obtained from multiple crossing of two females with three males, were provided by the Inland Fisheries Institute in Olsztyn. All individuals used in the experiment were kept under the same rearing conditions. Larvae were reared in recirculatory tanks with two inflow points. Initial stocking density was 2000 larvae per m² of the tank bottom. Subsequently stocking density was reduced to 1000 individuals per m² to average body weight of 0.5g, 750 individuals per m² to average body weight of 2-3g and 400 individuals per m² to average body weight of 20g. Water temperature was 18±0.5°C, and oxygen content was maintained above 7 mg/dm³ (70%). Beginning from 9th day post hatching (dph) larvae were feed brine shrimp (*Artemiasalina*) nauplii at the level of 30% of fish biomass per day. From 17thdph the diet was gradually switched to commercial extruded starter for marine fish, Perla Larva Proactive 6.0 (Skretting, Norway). When average body weight of fish reached 0.5g the feed was subsequently switched to Nutra (Skretting, Norway). Daily feeding rate and granulation was set according to Kolman (2008). The survivability of sturgeons over the first 25thdph was 58.7%, after that period mortality were observed occasionally.

At 200thdph slow and fast growing fingerlings were sampled for subsequent analyses. Sturgeons were anaesthetized using MS-222 (ethyl 3-aminobenzoate methanesulphonate, Sigma-Aldrich, St. Louis, MO, USA). Animals were measured (total length with ±0.1 mm accuracy and weight with ± 0.001 g accuracy). Individuals were assigned to slow or fast growing group based on body weight: fast growing 10 – 25 g and slow growing 0.5 – 5 g.

Histological and Immunohistochemical Analysis

White muscle tissue samples of 10 fast and 10 slow growing fish were collected from epaxial and caudal region according to Valente et al. (1999). Samples were preserved in Bouin's Fixative and subjected to standard histological procedures. The paraffin preparations were cut transversely into series of 5 µm thick sections using the Leica RM2265 microtome (Leica Microsystems, Wetzlar, Germany). Sections were stained with H&E, and trichrome Masson staining (Sigma Aldrich, St. Louise, USA) according to manufacturer recommendations.

Proliferation of MPCs was detected based on immunohistochemical reaction for PCNA with anti-PCNA antibody, 1:300(clone PC10, DAKO, Gdynia, Poland) according to Ostaszewska et al. (2008).

Morphometric analysis involved: the area of white muscle single fiber area (FA), the number of white muscle fiber per 1mm² (FN) and the total number of white muscle nuclei per 1mm² (NN) carried out in the right, upper quadrant of white muscle tissue. To determine the studied parameters 500th measurements were carried out. The number of PCNA positive nuclei were counted per 1mm² of white fiber muscles. Measurements were estimated using Nikon Eclipse 90i with Nikon Digital Sight DS-U1 camera.

Statistical Analysis

Total length and body weight were visualized as minimum, 1st quartile, median, 3rd quartile and maximum values. Total length and body weight were compared between fast and slow growing sturgeons using non-parametric Mann – Whitney's test. Variables in morphometric results were analyzed using the software STATISTICA 10.0 (StatSoft, Tulsa, OK, USA). Distribution of white muscle fibers into classes in terms of FA was illustrated by histograms. The difference in white muscle fibers distribution within and between sturgeon groups was estimated by Pearson Chi-square test. For all statistical tests, the significance level was set to $P \leq 0.05$.

Genetic Analysis

Fin-clips, originating from the same specimens subjected to the histological and immunohistochemical analysis, were collected and preserved in 75% ethanol. DNA extractions were performed using Wizard SV96 Genomic DNA Purification System Kit (Promega). Fish genotyping was based on 16 microsatellite loci (Supplemental Table S1) amplified in four multiplex PCR reactions as described in Panagiotopoulou, Popović, Zalewska, Węglański and Stanković (2014). Allele length reads were conducted using ABI PRISM3730 Genetic Analyzer, binning and scoring with PeakScanner Software v.1.0 (Applied Biosystem). Genetic polymorphism indices of the fast and slow growing sturgeon groups were estimated applying GenAEx v.6.501 (Peakall & Smouse, 2012), Arlequin v.3.5.1.2 (Excoffier & Lischer, 2010), Genepop v.4.0.10 (Raymond & Rousset, 1995) and FSTAT v.2.9.3.2 (Goudet, 1995) softwares. The combined over loci non-exclusion probability of a parent pair (NE-PP) of the analyzed set of individuals was calculated in Cervus v.3.0 software (Kalinowski, Taper & Marshall, 2007). Relatedness between the studied fish was attributed manually based on the allelic profiles of parental individuals. Only individuals, whose genotypes were perfectly matching to the fingerling's genetic profiles were considered as true parents. Other adult fish, used for multiple crossing, were additionally checked and excluded as potential parents based on mismatching alleles. The pair-wise genetic distances between individuals were calculated with GenAEx v.6.501 software and visualized with the same program using Principal Coordinates Analysis (PCoA). Genepop v.4.0.10 software was used to test for significant ($P < 0,05$) genic and genotypic differentiation between the two groups of sturgeons, applying the default implemented values.

Results

Morphological and Morphometric Analysis.

At 200thdph fast and slow growing sturgeons revealed significant variation in body weight and total length. Both parameters were significantly higher in fast growing sturgeons (Fig. 1).

Histological analysis showed that white skeletal muscle was the dominant muscle tissue in all individuals. Muscle fibers were separated by the connective tissue (endomysium and perimysium) and poorly vascularized. Mosaic pattern of muscle fibers distribution was observed in both analyzed sturgeon groups (Fig 2 A,B). Range of FA in fast growing sturgeons was $27.04\mu\text{m}^2 - 1494.62\mu\text{m}^2$ and in slow growing sturgeons $22.00\mu\text{m}^2 - 886.11\mu\text{m}^2$. Mean FA was higher in fast growing sturgeons however NN and FN was significantly higher ($P \leq 0,05$) in slow growing sturgeons (Tab.1). Empirical distribution of FA (divided in

seven distribution classes) in both sturgeon groups was statistically different (Fig. 3). In fast growing sturgeons fibers $<300\mu\text{m}^2$ were significantly less abundant and higher participation of fibers $>800\mu\text{m}^2$ was observed. In both, fast and slow growing sturgeon groups PCNA-positive myonuclei were observed in white muscle tissue (Fig. 2 C, D). Number of PCNA-positive myonuclei was significantly higher in slow growing sturgeons (Tab. 1).

Genetic Diversity and Relatedness

The overall microsatellite loci amplification and scoring success across all specimens was close to 98% (Supplemental Table S1). Altogether, 67 different alleles were identified in the analyzed brood stock across the 16 studied loci. This resulted in sufficient low value of non-exclusion probability of a parent pair (NE-PP= 5×10^{-6}) and enabled confident parentage analysis, when performing assignments of the candidate parental individuals to the obtained offspring. Both groups, the fast and slow growing individuals, exhibited very comparable level of genetic polymorphism, including allelic diversity (N_a and R between 3.5 and 4.0) and heterozygosity (ranging from 0.61 to 0.72) values (Fig. 4). The F_{IS} values were negative both in fast and slow growing groups of sturgeons (-0.135 and -0.107, respectively), though not significant. The analyzed fishes were progeny of all five spawners used for reproduction (two females: F1, F2 and three males: M1, M2, M3), resulting in five groups of full siblings (crosses F1xM1, F1xM2, F1xM3, F2xM1 and F2xM3) each of them encompassing slow and fast growing fingerlings. PCoA analysis of pair-wise genetic distances grouped the individuals according to their relatedness (Fig.5). In each of the identified kin group both fast and slow growing individuals occurred. The conducted analyzes of genic and genotypic differentiation showed no statistically significant differences between these two groups.

Discussion

The main aim of the conducted research was to characterize morphometric and morphological differences in white muscle tissue of fast and slow growing Atlantic sturgeons belonging to the same cohort. There is lack of knowledge about sturgeon fingerlings muscle growth and correlation between growth rate and muscle development. Up to date research are focused mainly on myogenesis during embryonic and larval development (Daczewska & Saczko, 2005; Steinbacher et al., 2006).

In the analyzed sturgeons, empirical distribution of muscle fiber area was similar to values observed in individuals of other juvenile fish species during their intensive muscle growth phase (Valente et al., 1999; dos Santos, Yoshirara, Marcco & Fonseca de Freitas, 2012). Transverse sections of white muscle tissue showed significant number of small muscle fibers in slow and fast growing sturgeons. This suggests that not hypertrophy but hyperplasia was the dominating muscle growth process in both sturgeon groups at 200thdph. Formation of a new muscle fibers continues until the fish achieve approximately 40% of final size, and afterwards fibers grow in a volume, not in a numbers (Zimmerman & Lowery, 1999). An average total length of investigated sturgeons was 19.3 cm, which constitutes around 6% of adult Atlantic sturgeons total length (Mohler, 2003). Muscle growth in sturgeons, similarly to other fish species, is a continuous process although running with different intensity in particular stages of development. Observed variations could therefore represent different phases of muscle growth, as it was shown for rainbow trout, where the



fish growth rate was unaligned (Valente et al., 1999). Both fast and slow growing Atlantic sturgeon fingerlings ended SH phase of muscle growth while the MH phase was not completed what was revealed by histological and immunohistochemical analysis. High occurrence of PCNA-positive myonuclei is caused by MPCs activation and intense new muscle fibers formation (Kamaszewski et al., 2014). A significant higher number of PCNA-positive myonuclei observed in slow growing individuals confirms intensification of MH growth phase and may reflect on the maintenance of growth potential in the slow growing sturgeons. Similar results were obtained for fast and slow growing rainbow trout (Valente et al., 1999) and Nile tilapia strains (dos Santos et al., 2012).

The observed variation in morphometric parameters of sturgeons belonging to the same cohort result probably from interaction of genetic, environmental and social factors as it was described for many fish species (Thorpe, 1977). In the presented study rearing conditions were fully controlled and identical for all studied specimens, therefore the observed differences in growth rate resulted mostly from combined genetic factors and social interactions. We did not find though any signs of higher relatedness or elevated levels of inbreeding that could explain the differences in body size of fast and slow growing fingerlings. All analyzed sturgeons exhibited lower levels of genetic polymorphism in comparison to the wild (source) population from St. John River (King, Lubinski & Spidle, 2001; Panagiotopoulou et al., 2012; Popović et al., 2014). This reduction arose from a small number of breeders used to obtain the offspring under study, however no genetic differentiation between the slow and fast growing group of sturgeons was detected. The risk of inbreeding depression increases during captive breeding programs as a consequence of using small number of breeders for reproduction or due to their unequal reproductive success (Borrell et al., 2011). However, different growth rates of the studied sturgeons were likely not caused by inbreeding depression, as the values of F_{IS} of the two compared groups were negative and similar. The microsatellite loci used in this study are assumed to be selectively neutral (King et al. 2001; Henderson-Arzapalo & King, 2002). However, as heritability of growth is relatively high, microsatellite markers were used in several studies to assess parental contributions in growth heritability in selective breeding programs. Microsatellites are also an efficient tool in family selection programs, especially when communal rearing techniques are applied (Ma et al., 2009; Borrell et al., 2011; Karahan et al., 2013; Ninh, Thoa, Knibb & Nuyen, 2014). Nevertheless, fast and slow growing individuals were intermixed in the identified kin groups.

The observed significant differences in the length and weight of the analyzed sturgeons may therefore result in first order from high stocking density in the breeding tanks. Several studies carried out on different fish species, including sturgeons, showed that high stocking density causes reduction in growth rate and increases variation of weight between individuals (Justice et al., 2009; Szczepkowski et al., 2011). As suggested by Biswas et al. (2013) high fish density adversely affects the growth rate of fish from the same cohort due to stress and increased interaction between individuals, including competition for access to food. Behavioral experiments of Sbikin and Budayev (1990) as well as Kynard and Horgan (2002) showed that Atlantic and shortnose sturgeons established hierarchy inside the group as a consequence of limited tank space. Bigger, and therefore dominating individuals restricted access to food for smaller sturgeons. Isolation of dominant individuals from the herd was sufficient enough for runt sturgeon recovery (Georgiadis, Hedrick, Johnston & Gardner, 2000). The success of sturgeon restitution program relies on high quality

stocking material and it requires optimal breeding conditions development. One of the important tasks, however, is to reduce the domestication effects that favors selection of traits that are not necessary privileged in natural conditions (Williams & Hoffman, 2009). These concern physiological and behavioral changes including smaller brain development in fish reared in captivity. The domestications effects can be substantially reduced when rearing environment simulate natural conditions (Williams & Hoffman, 2009). Minimizing domestication would be important also for the sturgeon restitution project, as it remains unclear, if the fast growing sturgeons reared in unnatural high densities would outperform the slow growing ones in wild environment.

To our knowledge this is the first study comparing the muscle morphology and genetic polymorphism of fast and slow growing sturgeons reared under controlled conditions. Factors causing the observed differences in growth rate, which was manifested in differences in white muscle tissue morphology, may be caused by the genetic background, feeding conditions and social interactions between fishes or the combination of above. To determine which of them has greater impact for growth, more detailed studies using larger sample set and different rearing conditions are needed. An important task includes identification of particular genes or major QTLs influencing phenotypic variation of sturgeon growth. Recognition and controlling the main factors affecting growth will improve sturgeon rearing both for farming and restitution purposes.

Acknowledgements

This work was financially supported by the National Centre for Research and Development grant NR 12-0129-10. The study was carried out with the use of CePT infrastructure financed by the EU.

References

- Biswas, G., Ghoshal, T.K., Natarajan, M., Thirunavukkarasu, A.R., Sundaray, J.K., Kailasam, M., ... & Ponniah, A.G. (2013). Effects of stocking density and presence or absence of soil base on growth, weight variation, survival and body composition of pearlspot, *Etroplus suratensis* (Bloch) fingerlings. *Aquaculture Research*, 44: 1266-1276. doi:10.1111/j.1365-2109.2012.03132.x
- Borrell, Y.J., Gallego, V., García-Fernández, C., Mazzeo, I., Pérez, L., Asturiano, J.F., ... & Blanco, G. (2011). Assessment of parental contributions to fast- and slow-growing progenies in the sea bream *Sparus aurata* L. using a new multiplex PCR. *Aquaculture*, 314(1): 58-65. doi:10.1016/j.aquaculture.2011.01.028
- Brodeur, J.C., Peck, L.S., & Johnston, I.A. (2002). Feeding increases MyoD and PCNA expression in myogenic progenitor cells of *Notothenia coviiceps*. *Journal of Fish Biology*, 60(6): 1475-1485. doi:10.1111/j.1095-8649.2002.tb02441.x
- Daczewska, M. & Saczko, J. (2005). Myotomal myogenesis of axial muscle in the sturgeon *Acipenser baeri* (*Chondrostei, Acipenseriformes*). *Folia biologica*, 53(1-2): 29-38. doi:10.3409/1734916054663537
- De-Santis, C. & Jerry, D.R. (2007). Candidate growth genes in finfish -Where should we be looking? *Aquaculture*, 272(1): 22-38. doi:10.1016/j.aquaculture.2007.08.036



- dos Santos, V.B., Yoshirara, E., Marcco, E.A. & Fonseca de Freitas, R.T. (2012). Muscle growth of two Nile tilapia (*Oreochromis niloticus*) strains. *Journal of agricultural science and technology B*, 2: 1195-1202. ISSN 1939-1250
- Excoffier L. & Lischer H.E. (2010). Arlequin suite ver 3.5: a new series of programs to perform population genetics analyses under Linux and Windows. *Molecular Ecology Resources*, 10(3): 564-567. doi:10.1111/j.1755-0998.2010.02847.x
- Georgiadis, M.P., Hedrick, R.P., Johnston, W.O. & Gardner, I.A. (2000). Mortality and recovery of runt white sturgeon (*Acipenser transmontanus*) in a commercial farm in California, USA. *Preventive Veterinary Medicine*, 43: 269-281. doi:10.1016/S0167-5877(99)00105-1
- Goudet, J. (2002). Fstat. A program to estimate and test gene diversities and fixation indices, release, 2(1). Retrieved from <http://www.unil.ch/izea/software/fstat.html>
- Henderson-Arzapalo & A., King, T.L. (2002). Novel microsatellite markers for Atlantic sturgeon (*Acipenser oxyrinchus*) population delineation and broodstock management. *Molecular Ecology Notes*, 2(4): 437-439. doi:10.1046/j.1471-8286.2002.00262.x
- Janhunen, M., Kauser, A. & Järvisalo, O. (2012). Costs of being extreme: - Do body size deviations from population or sire means decrease vitality in rainbow trout? *Aquaculture*, 370: 123-129. doi:10.1016/j.aquaculture.2012.10.013
- Johnston, I.A., Bower, N.I., & Macqueen, D.J. (2011). Growth and the regulation of myotomal muscle mass in teleost fish. *The Journal of Experimental Biology*, 214(10): 1617-1628. doi:10.1242/jeb.038620
- Justice, C., Pyper, B.J., Beamsederfer, R.C.P., Paragamian, V.L., Rust, P.J., Naufeld, M.D. & Ireland, S.C. (2009). Evidence of density- and size-dependent mortality in hatchery-reared juvenile white sturgeon (*Acipenser transmontanus*) in the Kootenai River. *Canadian Journal of Fisheries and Aquatic Sciences*, 66: 802-815. doi:10.1139/F09-034
- Kalinowski, S. T., Taper, M. L. & Marshall, T. C. (2007). Revising how the computer program CERVUS accommodates genotyping error increases success in paternity assignment. *Molecular Ecology*. V. 16:5: 1099-1106. doi:10.1111/j.1365-294X.2007.03089.x
- Kamaszewski, M., Prasek, M., Ostaszewska, T. & Dabrowski, K. (2014) The influence of feeding diets containing wheat gluten supplemented with dipeptides or free amino acids on structure and development of the skeletal muscle of carp (*Cyprinus carpio*). *Aquaculture International*, 22(1): 259-271. doi:10.1007/s10499-013-9683-0
- Karahan, B., Chatain, B., Chavanne, H., Vergnet, A., Bardon, A., Haffray, P., Dupont-Nivet, M. & Vandeputte, M. (2013). Heritabilities and correlations of deformities and growth-related traits in the European sea bass (*Dicentrarchus labrax*, L) in four different sites. *Aquaculture Research*, 44(2): 289-299. doi:10.1111/j.1365-2109.2011.03082.x
- King, T.L., Lubinski, B.A. & Spidle A.P. (2001). Microsatellite DNA variation in Atlantic sturgeon (*Acipenser oxyrinchus oxyrinchus*) and cross-species amplification in the Acipenseridae. *Conservation Genetics* 2: 103-119. doi:10.1023/A:1011895429669
- Kolman, R. (2008). Sturgeon breeding. Inland Fisheries Institute in Olsztyn. ISBN 83-60111-07-3.



- Kolman, R., Kapusta, A., Duda, A. & Wiszniewski, G. (2011). Review of the current status of the Atlantic sturgeon *Acipenser oxyrinchus oxyrinchus* Mitchell 1815, in Poland: principles, previous experience, and results. *Journal of Applied Ichthyology*, 27: 186-191. doi:10.1111/j.1439-0426.2011.01680.x
- Kynard, B. & Horgan, M. (2002). Ontogenetic behavior and migration of Atlantic sturgeon *Acipenser oxyrinchus oxyrinchus*, and shortnose sturgeon *A. brevirostrum*, with notes on social behavior. *Environmental Biology of Fishes*, 63: 137-150. doi:10.1023/A:1014270129729
- Ma, A.J., Wang, X.A. & Lei, J.L. (2009). Genetic parameterization for turbot *Scophthalmus maximus*: implication to breeding strategy. *Oceanologia Et Limnologia Sinica*, 2: 015. ISSN 0029-814X
- Martin, C.I. & Johnston, I.A. (2006). Endurance exercise training in common carp *Cyprinus carpio* L. induces proliferation of myonuclei in fast muscle fiber hypertrophy. *Journal of Fish Biology*, 69(4): 1221-1227. doi:10.1111/j.1095-8649.2006.01141.x
- Mohler, J. W. (2003). Culture manual for the Atlantic sturgeon, *Acipenser oxyrinchus oxyrinchus*. U.S. Fish and Wildlife Service, Region 5, Hadley, Massachusetts. Retrieved from <http://www.fws.gov/northeast/fisherycenter/pdfs/ASTCultureManual.pdf>
- Ninh, N.H., Thoa, N. P., Knibb, W. & Nuyen, N.H. (2014). Selection for enhanced growth performance of Nile tilapia (*Oreochromis niloticus*) in brackish water (15–20 ppt) in Vietnam. *Aquaculture*, 428-729: 1-6. doi:10.1016/j.aquaculture.2014.02.024
- O'Leary, S. J., Dunton, K. J., King, T. L., Frisk, M. G. & Chapman, D. D. (2014). Genetic diversity and effective size of Atlantic sturgeon, *Acipenser oxyrinchus oxyrinchus* river spawning populations estimated from the microsatellite genotypes of marine-captured juveniles. *Conservation Genetics*, (5): 1-9. doi:10.1007/s10592-014-0609-9
- Ostaszewska, T., Dabrowski, K., Wegner, A. & Krawiec, M. (2008). The effects of feeding on muscle growth dynamics and the proliferation of myogenic progenitor cells during pike perch development (*Sander lucioperca*). *Journal of the world aquaculture society*, vol 39, no. 2, April 2008. doi:10.1111/j.1749-7345.2008.00151.x
- Panagiotopoulou, H., Popović, D., Zaleska, K., Weglenski, P. & Stanković, A. (2014). Microsatellite multiplex assay for the analysis of Atlantic sturgeon populations. *Journal of Applied Genetic*, 1-6. doi:10.1007/s13353-014-0216-y
- Panagiotopoulou, H., Popović, D., Stanković, A., Węgleński, P., Kolman, R., Szczepkowski, M., & Raczkowski, M. (2012). Badania genetyczne biologicznego materiału wyjściowego do prac nad restytucją jesiotra bałtyckiego (*Acipenser oxyrinchus oxyrinchus* Mitchell) w Polsce. *Komunikaty Rybackie*, (6). No online access.
- Peakall, R. & Smouse, P. E. (2012). GenA1Ex 6.5: genetic analysis in Excel. Population genetic software for teaching and research—an update. *Bioinformatics*, 28(19): 2537-2539. doi:10.1093/bioinformatics/bts460
- Piotrowska, I., Szczepkowska, B., Kozłowski, M., Wunderlich, K. & Szczepkowski, M. (2013). Results of the larviculture of Atlantic sturgeon (*Acipenser oxyrinchus*) fed different types of diets. *Archives of Polish Fisheries*, 21:53-61. doi:10.2478/aopf-2013-0006



- Popović, D., Panagiotopoulou, H., Baca, M., Stefaniak, K., Mackiewicz, P., Makowiecki, D., King, T.L., ... & Stanković A. (2014). The history of sturgeon in the Baltic Sea. *Journal of biogeography*. doi:10.1111/jbi.12307
- Raymond, M. & Rousset, F. (1995). GENEPOP (version 1.2): population genetics software for exact tests and ecumenicism. *Journal of Heredity*, 86(3): 248-249. Retrieved from <http://jhered.oxfordjournals.org/content/86/3/248.full.pdf>
- Rescan, P.Y. (2005). Muscle growth patterns and regulation during fish ontogeny. *General and Comparative Endocrinology*. 142(1-2): 111-116. doi:10.1016/j.ygcen.2004.12.016
- Sbikin, Y.N. & Budayev, S.V. (1991). Some aspects of the development of feeding relationships in groups of young sturgeons (*Acipenseridae*) during artificial rearing. *Journal of Ichthyology* 31: 23–30. Retrieved from http://bio.uib.no/te/papers/Sbikin_1991_Some_aspects_of_the_development.pdf
- Steinbacher, P., Haslett, J.R., Sanger, A.M. & Stoiber, W. (2006). Evolution of myogenesis in fish: a sturgeon view of the mechanisms of muscle development. *Anatomy and Embryology*, 211(4): 311-322. doi:10.1007/s00429-006-0082-4
- Szczepkowski, M., Szczepkowska, B. & Piotrowska I. (2011). Impact of higher stocking density of juvenile Atlantic sturgeon, *Acipenser oxyrinchus* Mitchill, on Fish growth, oxygen consumption, and ammonia excretion. *Archives of Polish Fisheries* 19(2): 59-67. doi:10.2478/v10086-011-0007-6
- Thorpe, J.E. (1977). Bimodal distribution of length of juvenile atlantic salmon (*Salmo salar* L.) under artificial rearing conditions. *Journal of Fish biology*, V. 11: 175-184. doi:10.1111/j.1095-8649.1977.tb04111.x
- Valente, L.M.P., Rocha, E., Gomes, E.F.S., Silva, M.W., Oliveira M.H., Monteiro R.A.F. & Fauconneau B. (1999). Growth dynamics of white and red muscle fibres in fast-and slow-growing strains of rainbow trout. *Journal of fish biology*, 55(4): 675-691. doi:10.1111/j.1095-8649.1999.tb00710.x
- Valente, L.M., Moutou, K.A., Conceio, L.E., Engrola, S., Fernandes, J.M. & Johnston, I. A. (2013). What determines growth potential and juvenile quality of farmed fish species? *Reviews in Aquaculture*, 5(s1): 168-S193. doi:10.1111/raq.12020
- Waldman, J.R., King, T.L., Savoy, T., Maceda, L., Grunwald, C. & Wirgin, I. (2013). Stock Origins of Subadult and Adult Atlantic Sturgeon, *Acipenser oxyrinchus*, in a Non-natal Estuary, Long Island Sound. *Estuaries and Coasts*, 36(2): 257-267 doi:10.1007/s12237-012-9573-0
- Williams, S.E., Hoffman, A. (2009). Minimizing genetic adaptation in captive breeding programs: A review. *Biological Conservation*, 142 (11), 2388–2400. DOI: 10.1016/j.biocon.2009.05.034
- Yue, G.H. (2013). Recent advances of genome mapping and marker-assisted selection in aquaculture. *Fish and Fisheries*, X: 1-21. doi:10.1111/faf.12020
- Zimmerman, A.M. & Lowery, M.S. (1999). Hyperplastic development and hypertrophic growth of muscle fibers in the white seabass (*Atractoscion nobilis*). *Journal of Experimental Zoology*, 284: 299-308. doi:10.1002/(SICI)1097-010X(19990801)284:3.

Table 1. Histomorphometry of the white muscle fiber mean area (μm^2) (FA), total number of myonuclei of white muscle [mm^2] (TNN), total number of fibers of white muscle [mm^2] (TFN), number of PCNA-positive myonuclei [mm^2] (PCNA) of fast and slow growing group of sturgeons. The results were expressed as the mean \pm one standard deviation (SD). Statistically homologous groups have been indicated with the same characters ($P < 0.05$).

Group	FA	TNN	TFN	PCNA
Fast growing	420.1 \pm 62.67 μm^2 ^a	157.79 \pm 17.86 ^a	1432.19 \pm 160.96 ^a	92.38 \pm 80.19 ^a
Slow growing	336.4 \pm 41.26 μm^2 ^b	207.16 \pm 30.31 ^b	1778.76 \pm 154.33 ^b	174.78 \pm 91.96 ^b

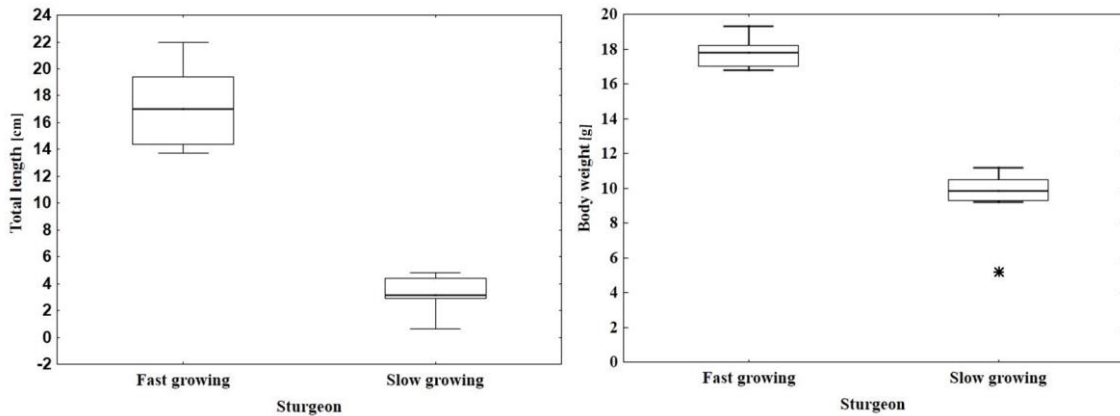


Figure 1. Total length (cm) and body weight (g) of fast and slow growing groups of sturgeons visualized as minimum, 1st quartile, median, 3rd quartile and minimum-maximum values. Extreme values were presented with asterisk (greater than three times the interquartile range over the third quartile).

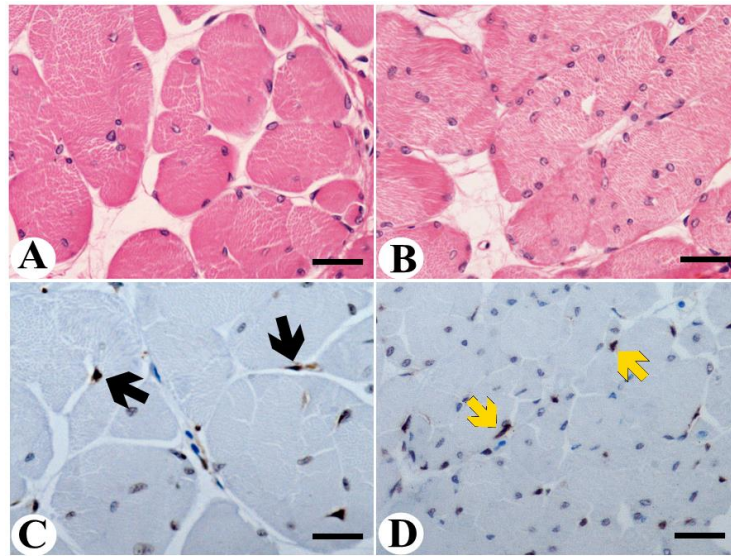


Figure 2. Transverse sections of myotomal white muscle in fast (A) and slow (B) growing sturgeons. PCNA-positive myonuclei in fast growing (C – black arrow) and slow (D -yellow arrow) growing sturgeons. A and B Masson Trichromes staining; C and D immunohistochemistry detection of PCNA; Scale bars = 50 μm .

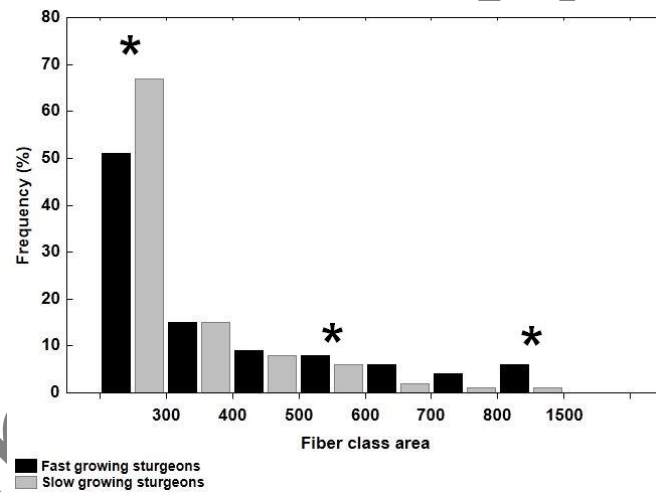


Figure 3. Distribution of white muscle fibers into classes in terms of area (μm^2) in fast and slow growing sturgeons. Bars represent class of fibers observed in a cross-sections in increasing order. Statistical significant differences were marked with asterisk.

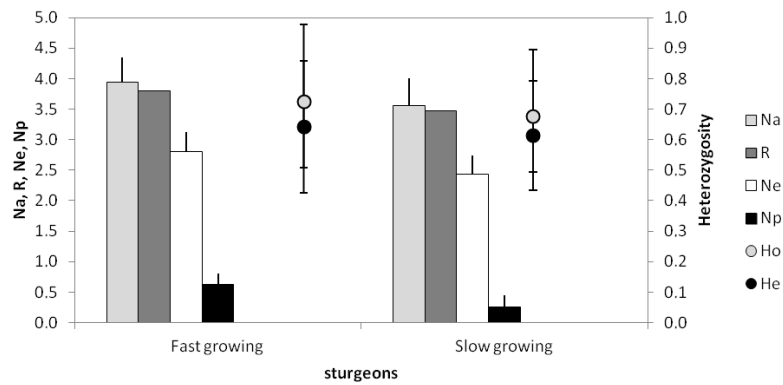


Figure 4. Genetic polymorphism indices values of the fast and slow growing groups of sturgeons. Na - the average number of alleles per locus R - allelic richness, Ne - effective number of alleles, Np - number of private alleles, Ho and He – observed and- expected heterozygosities.

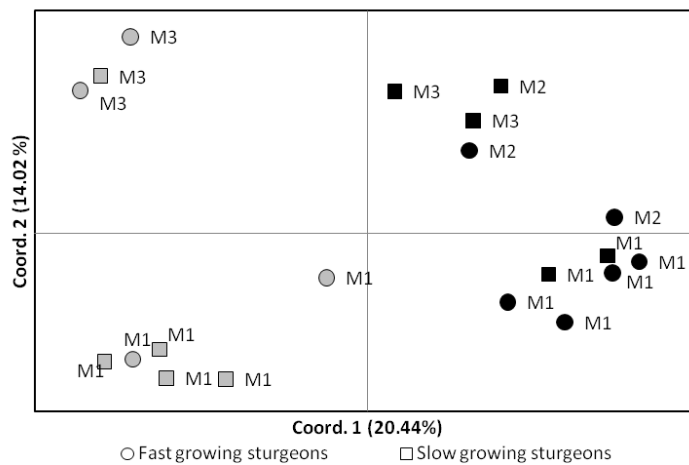


Figure 5. Principal coordinates analysis (PCoA) of pair-wise genetic distances between fast and slow growing fingerlings. Black indicators represent progeny of female F1, grey – F2. Symbols M1, M2, M3 indicate progeny of the males used for reproduction.